



LENITTY
Tunakufariji

COMPANY PROFILE

© 2024



lenittyservices@gmail.com | +254 116 384 937 | www.lenitty.com
+254 116 384 935

Mac Centre plaza, Airport North road next to Coop bank
Embakasi pipeline Nairobi.



WELCOME

Lenitty Welfare Association is a community-driven organization dedicated to fostering a sense of belonging, support, and empowerment. Rooted in the belief that collective efforts yield lasting impact, our mission is to provide a robust framework of support for our members during life's challenging moments while promoting holistic welfare and community development.

With a wide array of services designed to meet diverse needs—from Last respect as a service to community empowerment initiatives—we strive to uplift and strengthen individuals and families. By fostering a culture of collaboration and care, we aim to make a lasting difference in the lives of our members, building resilient communities where everyone can thrive. Together, we turn challenges into opportunities and dreams into realities.



Vision Statement:

To be the leading welfare empowering, members, and communities to overcome challenges of unforeseen eventualities through pooling of resources.

Mission Statement:

Lenitty kenya is aiming to provide compassionate, dignified, and personalized care that honors families with comfort in difficult moments

Core Values

1. **Compassion:** Placing empathy and care at the forefront of all our actions.
2. **Integrity:** Upholding honesty and transparency in every interaction.
3. **Empowerment:** Creating opportunities for growth and self-reliance.
4. **Unity:** Fostering togetherness and collaboration for shared goals.
5. **Service Excellence:** Delivering unmatched support and services to our members.

Objectives

1. To recognize the importance of honoring loved ones with support to ease the burden on families and communities during difficult times.
2. To Empower people and communities socially, economically, and emotionally. Provide standard services to members.
3. To provide standard services to it's members
4. To champion transparency and accountability in all association activities.
5. To foster unity and resolve among members.



OUR SERVICES

The Lenitty Welfare Association offers several key services aimed at improving the quality of life and providing support during critical moments for individuals and families.

1. LAST RESPECT SERVICES

We specialize in dignified and comprehensive end-of-life services, ensuring that every farewell is respectful and memorable. Our services include:

- Body Transportation
- Mortuary Expenses (up to Kes 16500)
- Clothing of the Body
- Executive Casket
- Lowering Gears
- GazeboTrolley
- PA System
- Eulogy Design
- Wooden Cross and Metallic Seal

Additionally, we offer cashback support to assist families during this challenging time.

Packages/Categories

| Cover Plan | Particulars | Monthly Contribution |
|---------------------------------|---|--|
| 1. Individual Cover | Covers the principal member only (18yrs-69yrs of age). | Kes. 150 |
| 2. Family Cover | Father, mother (18-69yrs), and biological children (1-17yrs). | Kes. 250 |
| 3. Family Plus Cover | Father, mother, children, and biological parents of the principal member. | Kes. 350 |
| 4. Extended Family Cover | Nuclear family and couples' biological parents (up to 69yrs). | Kes. 450 |
| 5. Platinum Cover | Nuclear family and both couples' biological parents (up to 79yrs). | Kes. 550 |
| 6. Seniors Cover | Nuclear family and both couples' biological parents (80-100 yrs) | Kes. 650 |
| 7. VIP COVER | Nuclear family and both couples' biological parents (below 79 yrs) (Special body transportation, flowers) Registration for VIP is Kes 500 | Kes. 750 |
| 8. Group Cover | Covers group member, spouses, biological children (1-17yrs), parents, and in-laws of up to 79 yrs Minimum 30 members required. | Kes. 300 per member (Payable Annually) |

IMPORTANT NOTES

1.) Grace Period after registering as a member

- > Grace period 1-79yrs 4 months
- > Grace period 80-89yrs 6 months
- > Grace period 90-100yrs 8 months

2.) Monthly contributions should be remitted on 10th of every month or earlier.

- Failure to provide correct details about you and your dependents shall attract a penalty.
- Failure to pay 3 consecutive months results to being DEFaulter
- In case of defaulting, the contributions are non-refundable.
- Where the member's contributions are not consistent on a monthly basis, then monies received shall not be reimbursed and this shall be rendered as a defaulter.
- Once considered a defaulter, the member will be notified through messaging from LENITTY-KENYA or phone call

FARIJI SUPPORT (Cash back for the Family)

| Cover/ Classes | Monthly Contribution (Kshs) | Compensation (Kshs) |
|----------------|-----------------------------|---------------------|
| Class A | 250 | 30,000 |
| Class B | 350 | 50,000 |
| Class C | 500 | 70,000 |
| Class D | 600 | 100,000 |
| Class E | 850 | 120,000 |
| Class F | 1000 | 150,000 |

COMING SOON



2. AFYA YETU SUPPORT-(COMING SOON)

LENITTY aims to provide access to essential health protection for individuals and families who cannot afford them through pooling of resources.

3. Empowerment Services

a) Empowering Financial Freedom

Lenitty Welfare is committed to fostering financial independence and stability within the community. As part of our empowerment initiative, we offer specialized financial services designed to cater to the needs of individuals and groups striving for economic growth and resilience.

b) Saving Services

Our saving programs are tailored to help members build a secure financial future. With structured plans and competitive benefits, we encourage a culture of disciplined savings, which serves as a foundation for long-term economic stability.

c) Lending Services

Understanding the importance of access to credit, Lenitty Welfare provides lending as a key service to empower individuals and businesses to achieve their goals. Our lending solutions are designed to be accessible, affordable, and impactful, driving growth and economic empowerment.

d) Non-Financial Services

At Lenitty Kenya, we empower communities beyond financial support by addressing diverse needs to foster growth and resilience.

-Agricultural Support- We promote sustainable farming by enhancing skills, providing quality inputs, and offering advisory services on modern practices and market linkages.

-Guidance and Counselling: Our counselling services support mental and emotional well-being through personal and family counselling, youth programs, and mental health workshops.

Lenitty Kenya remains committed to uplifting individuals and communities holistically.

Lenitty Kenya serves as a pillar of support, offering compassionate care and tailored services to empower families and communities in times of need. Through vocational training programs for young adults, we equip them with essential skills for employment, fostering self-reliance and economic growth. Additionally, our financial literacy workshops empower individuals to better manage their resources, cultivate a culture of saving, and build a secure financial future.



4. Charity Initiatives

Our charity programs are designed to uplift and support the less fortunate within our community through donations, outreach programs, and community service activities.

Why Choose Lenitty Welfare Association?:

Comprehensive Support: We provide end-to-end services for last respect arrangements and beyond.

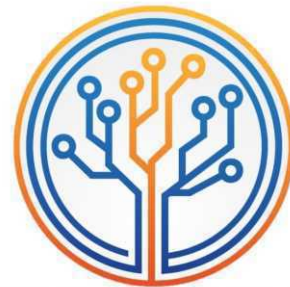
Community-Centric Approach: Our services are designed to empower and support members during life's critical moments.

Reliability: With experienced professionals, we ensure timely and high-quality service delivery.

Affordable Packages: Our programs are designed to suit a wide range of financial needs without compromising quality.



OUR PARTNERS



TIRO TECH SOLUTIONS
Think Different



LENITTY

Tunakufariji



CONTACT US VIA



lenittyservices@gmail.com | +254 116 384 937 | www.lenitty.com
+254 116 384 935

Mac Centre plaza, Airport North road next to Coop bank
Embakasi pipeline Nairobi.

Our Agenda Our Welfare; TUNAKUFARIJI